

Technology and Art,
Dignity and Dynamics
impress customers at last.



 **ST-1000** Catalog

Contents

⚡ ST-1000 UTM Catalog

Universal Testing Machine 03

Product Specifications 04

Light-Salt Testing Software 06

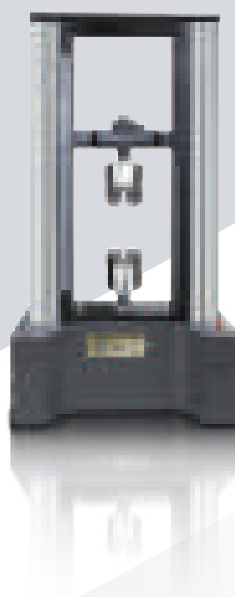
⚡ ST-1000



⚡ ST-1001



⚡ ST-1002



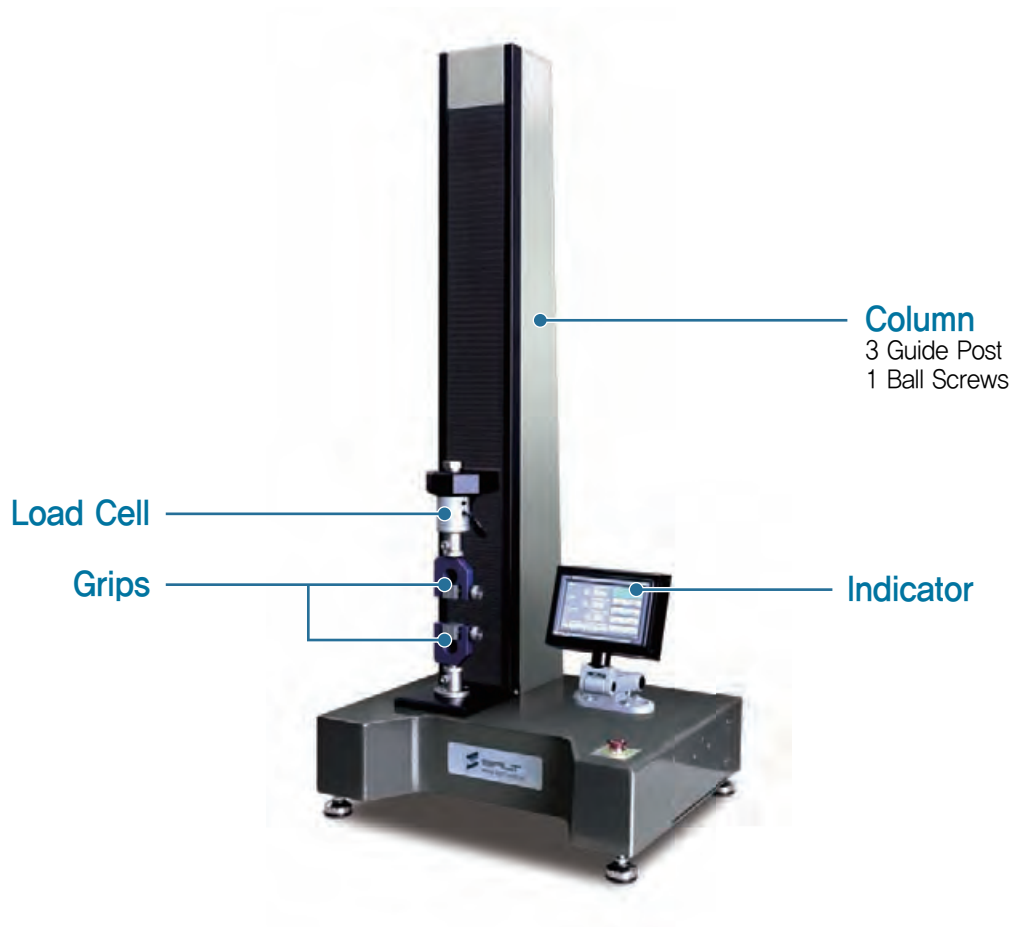
⚡ ST-1004



Universal Testing Machine

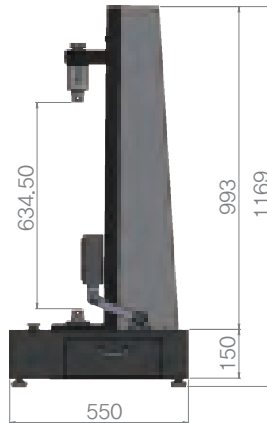
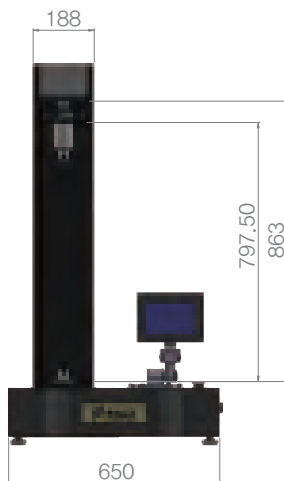
The ST-1000 is designed to serve the testing and measurement requirements of laboratories, research and development, quality control, manufacturers and educational fields. Plastic films, textiles, fabric, wire, cord, soft plastics, paper, tape etc. are ideal specimens for the ST-1000.

Tests such as tensile, compression, bending, peel, puncture etc. are test methods available on the ST-1000.



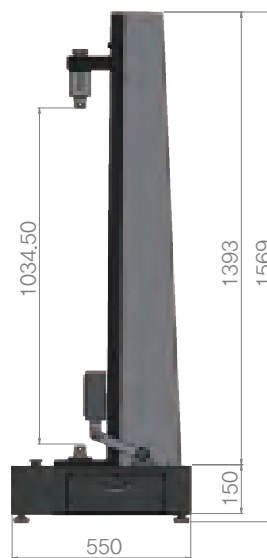
ST-1000 Features

- ✓ Model capacity: 5N~3kN
- ✓ Single column electro mechanical table top model
- ✓ High precision load cell, class 1 and class 0.5 calibration
- ✓ 1/300,000 digital display force resolution / 0.001 displacement
- ✓ 0.01~500mm/min speed (up to 1000mm/min option)
- ✓ 220V 60/50Hz Mitsubishi servo motor and drive
- ✓ Up to 4 step division of force capacity for more detailed readings
- ✓ Overload protection limit sensor, non-contact displacement limit sensor, emergency power cut off button.



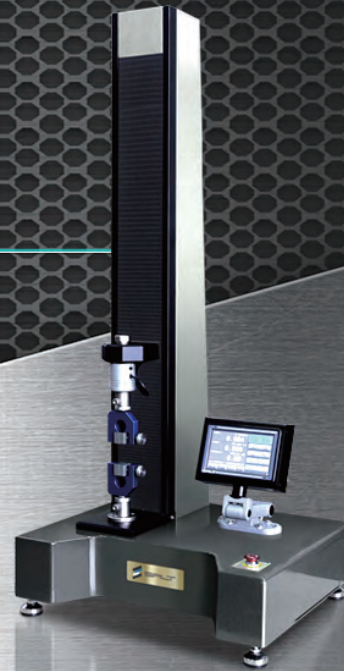
SALT

ST-1000 (3kN)
Universal Testing Machine



SALT

High elongation type
ST-1000 (3kN)
Universal Testing Machine

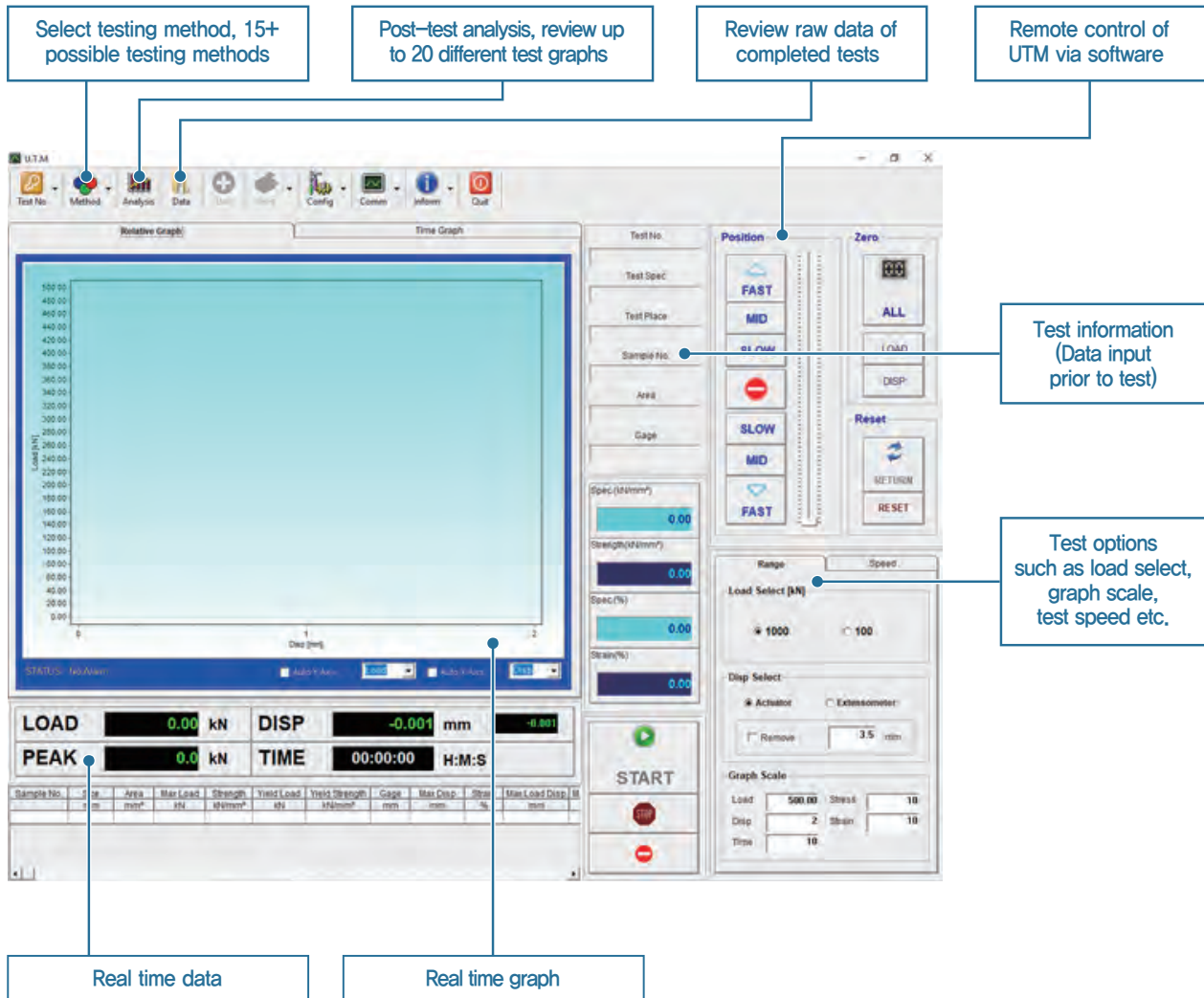
ST-1000Universal Testing Machine
Capacity: 3kN

Model	ST-1000	ST-1000 High Elongation
Frame Capacity	5N-3kN	5N-3kN
Loading Method	Servo Motor (Mitsubishi) electromechanical	
Load Accuracy	$\pm 0.5\%$	
Calibration	Class 1 / Class 0.5	
Force Resolution	1/300,000	
Stroke resolution	$\pm 0.001\text{mm}$	
Test Room (W x H mm)	170 x 700	170 x 1100
Total Weight (Approx.)	70kg	80kg
Force Range	Up to 4 steps	
Column	Single	
Controller	LCD Digital Indicator, Force control, Position control	
Transfer Screw	Ball Screw / Guide bar	
Crosshead Speed	0.01mm ~ 500mm/min (1000mm/min max optional)	
Speed accuracy	0.01mm/min	
Driving System	Mitsubishi Servo Motor & Server Driver (Japan)	
Safety Device	Up limit, Down Limit, Load limit, Stroke Limit, Emergency stop	
Power Supply	AC 220V / 50,60Hz	
Dimension (W x D x H mm)	650 x 550 x 1170	650 x 550 x 1570
Computer Software OS	Windows only, Light-Salt UTM Software Version 12,6,0	
Extensometer	Encoder type, Strain gauge type, Position meter type (Optional)	

Light-Salt Testing Software

- ✓ Light-Salt testing software, close loop. Control of load, displacement, extension, stress and strain.
- ✓ Remote control via software, text execution, data analysis available through RS-232 port
- ✓ Software updates and modification installation available via email or remote support

Software testing screen

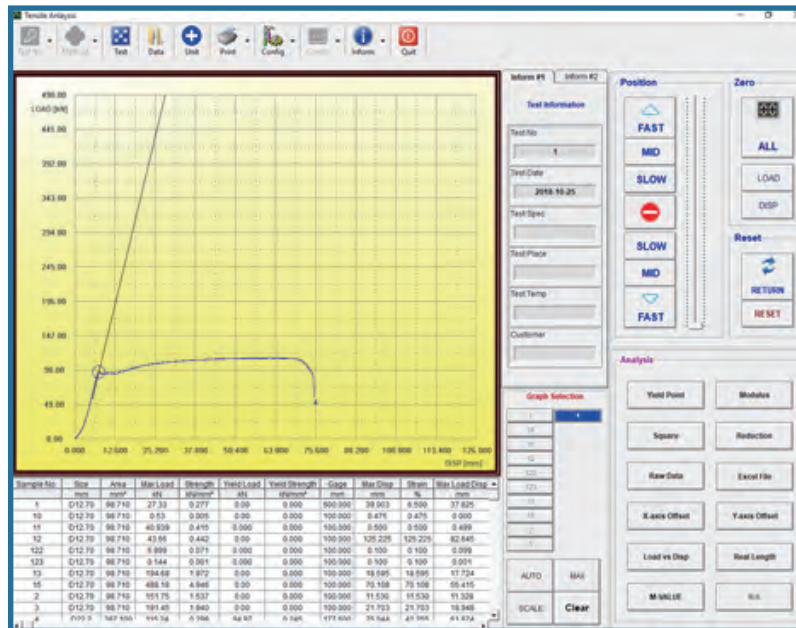


Light-Salt Software exclusively for the ST-1000 Series enables users to find the intrinsic characteristics of various materials – such as stress, strain, modulus, yield point etc. These are the main measures of material property tests such as tensile, compression, flexural, cyclic, fatigue etc. Software can be modified for special tests and measurements upon user's requirements and may be analyzed post-test.

Light-Salt Testing Software

- ✓ Diverse and robust configurations for automatic test start/end options, graph options, PID values, crosshead movement speeds etc
- ✓ 15+ different Testing Methods including tensile, compression, flexural/bending, shear, COF, cyclic, creep, relaxation, keeping etc.

Test Analysis Screen



- ✓ View data and graphs of previously ran tests
- ✓ Determine and analyze data points such as yield point, breaking point, modulus etc.

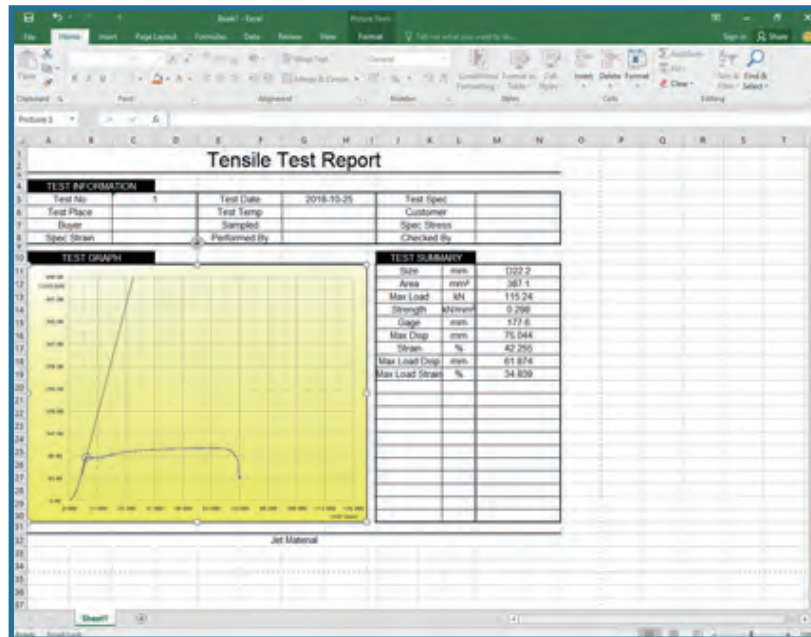
Test report print options

The 'Report Print' dialog box shows a 'Tensile Test Report' with fields for Title, Remarks, and Approval. The 'Item Selection' dialog box allows users to configure which data items are displayed or printed in the report.

Test Method	Tensile Item
Display Item	Print Item
<input checked="" type="checkbox"/> Size	<input checked="" type="checkbox"/> Size
<input checked="" type="checkbox"/> Area	<input checked="" type="checkbox"/> Area
<input checked="" type="checkbox"/> Max Load	<input checked="" type="checkbox"/> Max Load
<input checked="" type="checkbox"/> Strength	<input checked="" type="checkbox"/> Strength
<input checked="" type="checkbox"/> Yield Load	<input type="checkbox"/> Yield Load
<input checked="" type="checkbox"/> Yield Strength	<input type="checkbox"/> Yield Strength
<input checked="" type="checkbox"/> Gauge	<input type="checkbox"/> Gauge
<input checked="" type="checkbox"/> Max Chop	<input type="checkbox"/> Max Chop
<input checked="" type="checkbox"/> Strain	<input type="checkbox"/> Strain
<input checked="" type="checkbox"/> Max Load Chop	<input type="checkbox"/> Max Load Chop
<input checked="" type="checkbox"/> Max Load Str	<input type="checkbox"/> Max Load Str
<input type="checkbox"/> Modulus	<input type="checkbox"/> Modulus
<input type="checkbox"/> Reduction	<input type="checkbox"/> Reduction
<input type="checkbox"/> Square	<input type="checkbox"/> Square
<input type="checkbox"/> True Strength	<input type="checkbox"/> True Strength
<input type="checkbox"/> True Strain	<input type="checkbox"/> True Strain
<input type="checkbox"/> M100	<input type="checkbox"/> M100
<input type="checkbox"/> M200	<input type="checkbox"/> M200
<input type="checkbox"/> M300	<input type="checkbox"/> M300
<input checked="" type="checkbox"/> Test Time	<input type="checkbox"/> Test Time
<input type="checkbox"/> Status	<input type="checkbox"/> Status

- ✓ Test report printing options include direct to printer or excel file export.
- ✓ Test report data can be configured to show only necessary data and to exclude unused data.

Test report print options



- ✓ Easily export test reports to Excel, html, csv, txt, pdf etc.
- ✓ Raw data, detailed reports, multiple graphs and values.

Uniform calibration with keeping test method

Calibration uniformity worldwide

Precise and accurate input and output

?

WHY
Customers Select SALT Products?

The keeping test function of Salt Co.'s software is not only for recording data and testing, but it can be used for world wide uniformity during calibration.

Calibration of any U.T.M is necessary as it must be precise and accurate when measuring and recording data. The keeping test method makes calibration easy and uniform. No matter where the machine is calibrated or who does the calibration, the keeping test method ensures no variation from the machine so the calibrator can do their jobs more efficiently.

Sample No.

Sample No.	Load (N)	Displacement (mm)	Strain (%)
1	100	1	0
2	200	1	0
3	300	1	0
4	400	1	0
5	500	1	0
6	600	1	0
7	700	1	0
8	800	1	0
9	900	1	0
10	1000	1	0

APPLY CANCEL

- ✓ Keeping test calibration method for easier uniformity when calibrating Salt Co., UTM's.
- ✓ Keeping test is the basis for creep test and relaxation test method.
- ✓ Over 15 different testing methods including tensile, compression, bending, keeping, tearing, CBR etc.
- ✓ All UTMs go out with a KOLAS Class 1 / Class 0.5 calibration. Yearly calibration can be done from anywhere internationally with this method.

Art

dignity

Technology and Art,
Dignity and Dynamics,
impress customers at last.

**The Company like the Light
and Salt of the World**



Technology

dynamic



SALT Co., Ltd.

Head Office/Plant | #12-5 Dohwa Techno, 133
Yeomjeon-ro, Nam-gu, Incheon, Korea

Plant 2 | 32 Seokcheon-ro 453beon-gil, Ojeong-gu,
Bucheon-si, Gyeonggi-do, Korea

Email | salt@light-salt.kr

T E L | 1800-8783

F A X | 032-777-5586

www.light-salt.kr